

KI series

LED indicators



DISTINCTIVE FEATURES

- Wide choice of bezel colors
- Wide choice of LEDs
- Laser etched symbols
- Long life expectancy



ENVIRONMENTAL SPECIFICATIONS

- Salt spray resistance : 96 hours according to IEC 512-6, test 11f
- Operating temperature : -40 °C to +85 °C (-40 °F to +185 °F)



ELECTRICAL AND GENERAL SPECIFICATIONS

- Operating voltage : 6 VDC, 12 VDC or 24 VDC
- Nominal current : 20 mA per LED
- Panel thickness : 0.8 mm to 4.6 mm
- Recommended panel thickness : between 2 mm and 3.5 mm

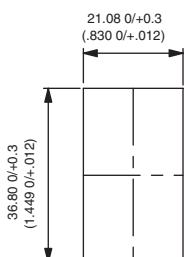


MATERIALS

- Case : ABS
- Bezel : ABS
- Terminals : brass, silver plated



PANEL CUT-OUT



The company reserves the right to change specifications without notice.

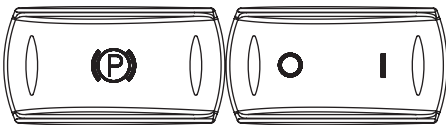
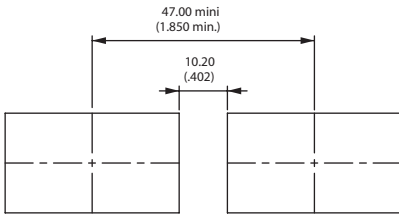
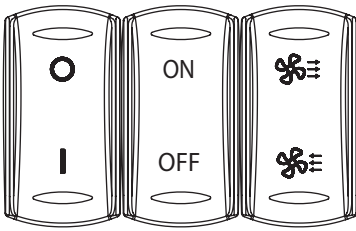
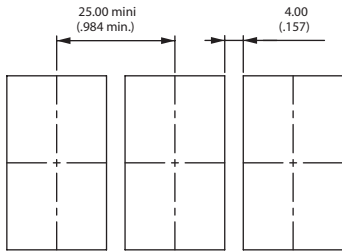


KI series

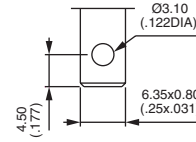
LED indicators



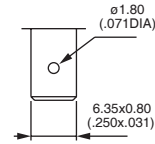
MATRIX MOUNTING



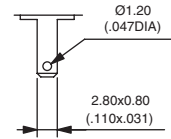
TERMINALS



Solder lug / quick-connect



Normalized quick-connect 6.35x0.8

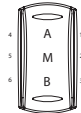


Normalized quick-connect 2.8x0.8



BUILD YOUR PART NUMBER

CASE + LEDS

<div style="border: 1px solid black; padding: 2px; width: 40px; margin: 0 auto;">KI</div> <p style="text-align: center; font-size: small;">SERIES</p>	<div style="border: 1px solid black; padding: 2px; width: 40px; margin: 0 auto;"> </div> <p style="text-align: center; font-size: small;">COLORS</p>	<div style="display: flex; justify-content: space-around; font-size: small;"> Side A Center M Side B </div> <p style="text-align: center; font-size: small;">LEDS</p>	<div style="border: 1px solid black; padding: 2px; width: 40px; margin: 0 auto;"> </div> <div style="border: 1px solid black; padding: 2px; width: 40px; margin: 0 auto;"> </div> <p style="text-align: center; font-size: small;">TYPE OF ILLUMINATION</p>	<div style="display: flex; justify-content: space-around; font-size: small;"> Area A Area M Area B </div> <p style="text-align: center; font-size: small;">SYMBOLS</p>	<div style="border: 1px solid black; padding: 2px; width: 40px; margin: 0 auto;"> </div> <p style="text-align: center; font-size: small;">TERMINALS WITH BARRIER</p>																																																																			
	<table border="0" style="width: 100%; font-size: small;"> <tr><td style="width: 20px; text-align: center;">1</td><td>Blue</td></tr> <tr><td style="text-align: center;">1/4</td><td>Dark blue</td></tr> <tr><td style="text-align: center;">2</td><td>Black</td></tr> <tr><td style="text-align: center;">3</td><td>Green</td></tr> <tr><td style="text-align: center;">4</td><td>Grey</td></tr> <tr><td style="text-align: center;">5</td><td>Yellow</td></tr> <tr><td style="text-align: center;">6</td><td>Red</td></tr> <tr><td style="text-align: center;">9</td><td>Orange</td></tr> </table>	1	Blue	1/4	Dark blue	2	Black	3	Green	4	Grey	5	Yellow	6	Red	9	Orange	<table border="0" style="width: 100%; font-size: small;"> <tr><td style="width: 20px; text-align: center;">X</td><td>None</td></tr> <tr><td style="text-align: center;">A</td><td>LED 6 V red</td></tr> <tr><td style="text-align: center;">B</td><td>LED 6 V green</td></tr> <tr><td style="text-align: center;">C</td><td>LED 6 V yellow</td></tr> <tr><td style="text-align: center;">M</td><td>LED 6 V blue</td></tr> <tr><td style="text-align: center;">R</td><td>LED 6 V white</td></tr> <tr><td style="text-align: center;">D</td><td>LED 12 V red</td></tr> <tr><td style="text-align: center;">E</td><td>LED 12 V green</td></tr> <tr><td style="text-align: center;">F</td><td>LED 12 V yellow</td></tr> <tr><td style="text-align: center;">N</td><td>LED 12 V blue</td></tr> <tr><td style="text-align: center;">S</td><td>LED 12 V white</td></tr> <tr><td style="text-align: center;">J</td><td>LED 24 V red</td></tr> <tr><td style="text-align: center;">K</td><td>LED 24 V green</td></tr> <tr><td style="text-align: center;">L</td><td>LED 24 V yellow</td></tr> <tr><td style="text-align: center;">P</td><td>LED 24 V blue</td></tr> <tr><td style="text-align: center;">T</td><td>LED 24 V white</td></tr> </table> <p style="font-size: x-small;">Etc.</p> <hr style="width: 100%;"/> <p style="font-size: x-small;">DC voltage standard</p>	X	None	A	LED 6 V red	B	LED 6 V green	C	LED 6 V yellow	M	LED 6 V blue	R	LED 6 V white	D	LED 12 V red	E	LED 12 V green	F	LED 12 V yellow	N	LED 12 V blue	S	LED 12 V white	J	LED 24 V red	K	LED 24 V green	L	LED 24 V yellow	P	LED 24 V blue	T	LED 24 V white	<table border="0" style="width: 100%; font-size: small;"> <tr><td style="width: 20px; text-align: center;">X</td><td>Standard</td></tr> <tr><td style="text-align: center;">S</td><td>Super bright</td></tr> </table>	X	Standard	S	Super bright		<p style="text-align: center; font-size: small;">MARKING ORIENTATION</p> <table border="0" style="width: 100%; font-size: small;"> <tr><td style="width: 20px; text-align: center;">N</td><td>North</td></tr> <tr><td style="text-align: center;">O</td><td>West</td></tr> <tr><td style="text-align: center;">S</td><td>South</td></tr> <tr><td style="text-align: center;">E</td><td>East</td></tr> </table> <p style="font-size: x-small;">Drawings on the following pages.</p> <hr style="width: 100%;"/>	N	North	O	West	S	South	E	East	<table border="0" style="width: 100%; font-size: small;"> <tr><td style="width: 20px; text-align: center;">C</td><td>Solder lug / quick-connect</td></tr> <tr><td style="text-align: center;">F</td><td>Quick-connect 6.35 mm</td></tr> <tr><td style="text-align: center;">J</td><td>Quick-connect 2.8 mm</td></tr> </table>	C	Solder lug / quick-connect	F	Quick-connect 6.35 mm	J	Quick-connect 2.8 mm
1	Blue																																																																							
1/4	Dark blue																																																																							
2	Black																																																																							
3	Green																																																																							
4	Grey																																																																							
5	Yellow																																																																							
6	Red																																																																							
9	Orange																																																																							
X	None																																																																							
A	LED 6 V red																																																																							
B	LED 6 V green																																																																							
C	LED 6 V yellow																																																																							
M	LED 6 V blue																																																																							
R	LED 6 V white																																																																							
D	LED 12 V red																																																																							
E	LED 12 V green																																																																							
F	LED 12 V yellow																																																																							
N	LED 12 V blue																																																																							
S	LED 12 V white																																																																							
J	LED 24 V red																																																																							
K	LED 24 V green																																																																							
L	LED 24 V yellow																																																																							
P	LED 24 V blue																																																																							
T	LED 24 V white																																																																							
X	Standard																																																																							
S	Super bright																																																																							
N	North																																																																							
O	West																																																																							
S	South																																																																							
E	East																																																																							
C	Solder lug / quick-connect																																																																							
F	Quick-connect 6.35 mm																																																																							
J	Quick-connect 2.8 mm																																																																							

On request : 48 VDC voltage - AC voltage - new design.
Symbols & Accessories : see end of the series.



ABOUT THIS SERIES

- Notice :** please note that not all combinations of above numbers are available. Refer to the following pages for further information.
- Mounting accessory :** Standard hardware supplied : one flat seal.

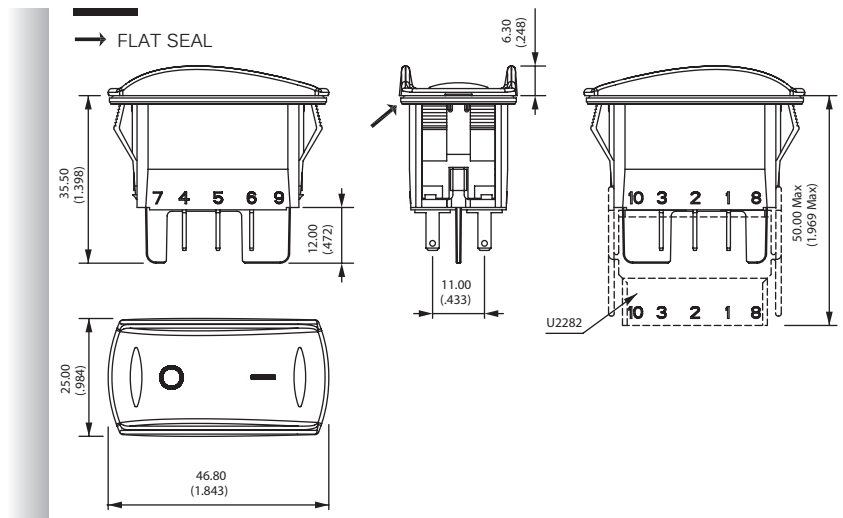
KI series

LED indicators

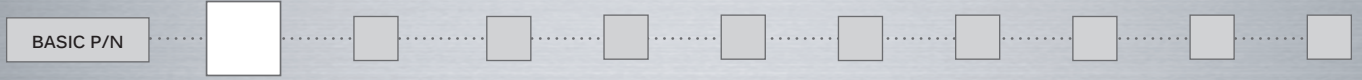
DIMENSIONS



KI

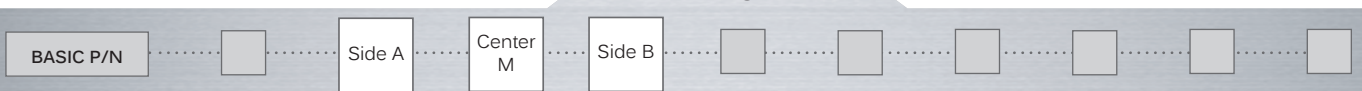


BEZEL COLOR



- 1 Blue
- 1/4 Dark blue
- 2 Black
- 3 Green
- 4 Grey
- 5 Yellow
- 6 Red
- 9 Orange

LEDS



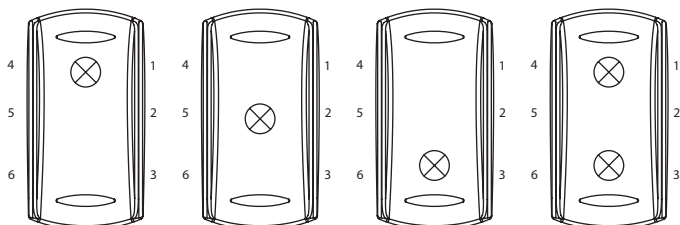
Complete each enlarged box with one of the codes listed below.

X Without LED

	Red	Green	Yellow	Blue	White	Amber	Red/green
6 VDC	A	B	C	M	R	4	1
12 VDC	D	E	F	N	S	5	2
24 VDC	J	K	L	P	T	6	3
No resistor	U	V	W	Y	Z	9	8

LED consumption : 20 mA
 @ nominal voltage (25 °C / 77 °F)
 Other illumination solutions : on request.

Side A



Side B

TYPE OF ILLUMINATION

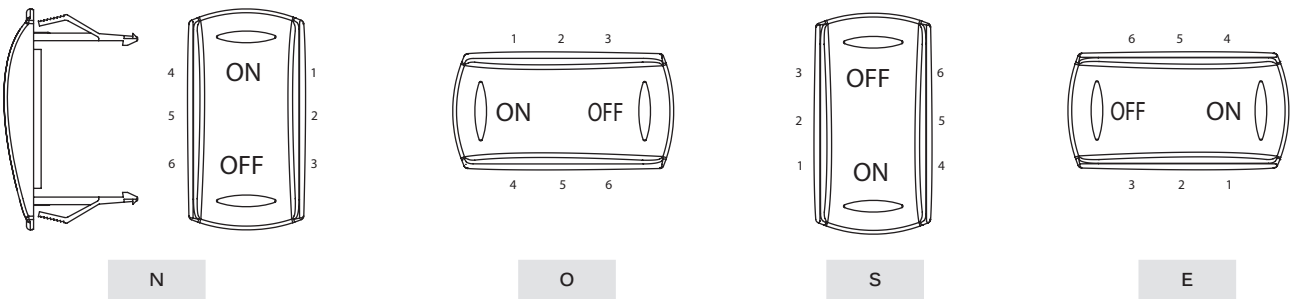


- X Standard
- S Super bright

MARKING ORIENTATION



If no marking required, leave box blank.
Other orientations : on request



SYMBOLS



XX No symbol

Available symbols

Complete each enlarged box with the one of the codes listed on the following pages.

Marking color

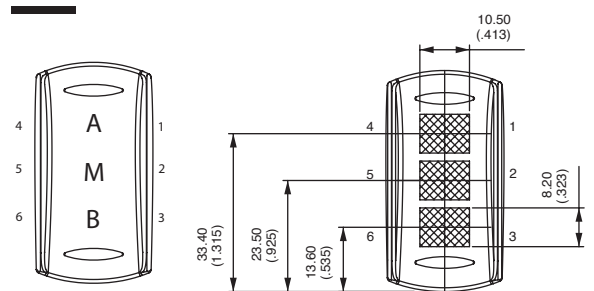
White (laser etching)

Laser etching resistance

- Water and petrol resistant according to EN61058-1
- Tear resistant (cross-cut test) according to NF ISO 2409 : class 0
- UV resistant according to ISO 4892-2

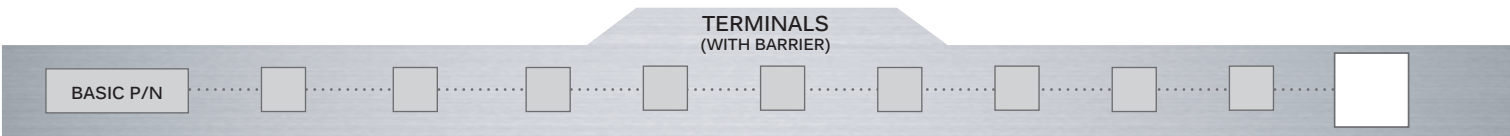
Marking area

The symbol will be included in the hatched area.



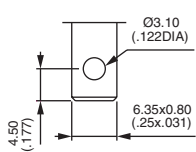
KI series

LED indicators

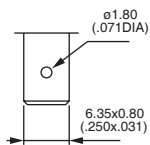


- C Solder lug / quick-connect : 10 terminals for use with connector U2292
- F Normalized quick-connect 6.35x0.8 : 10 terminals for use with connector U2292
- J Normalized quick-connect 2.8x0.8 : 10 terminals for use with connector U2292

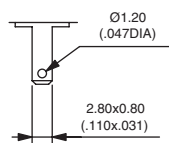
Terminals are marked on the case.



C



F



J

